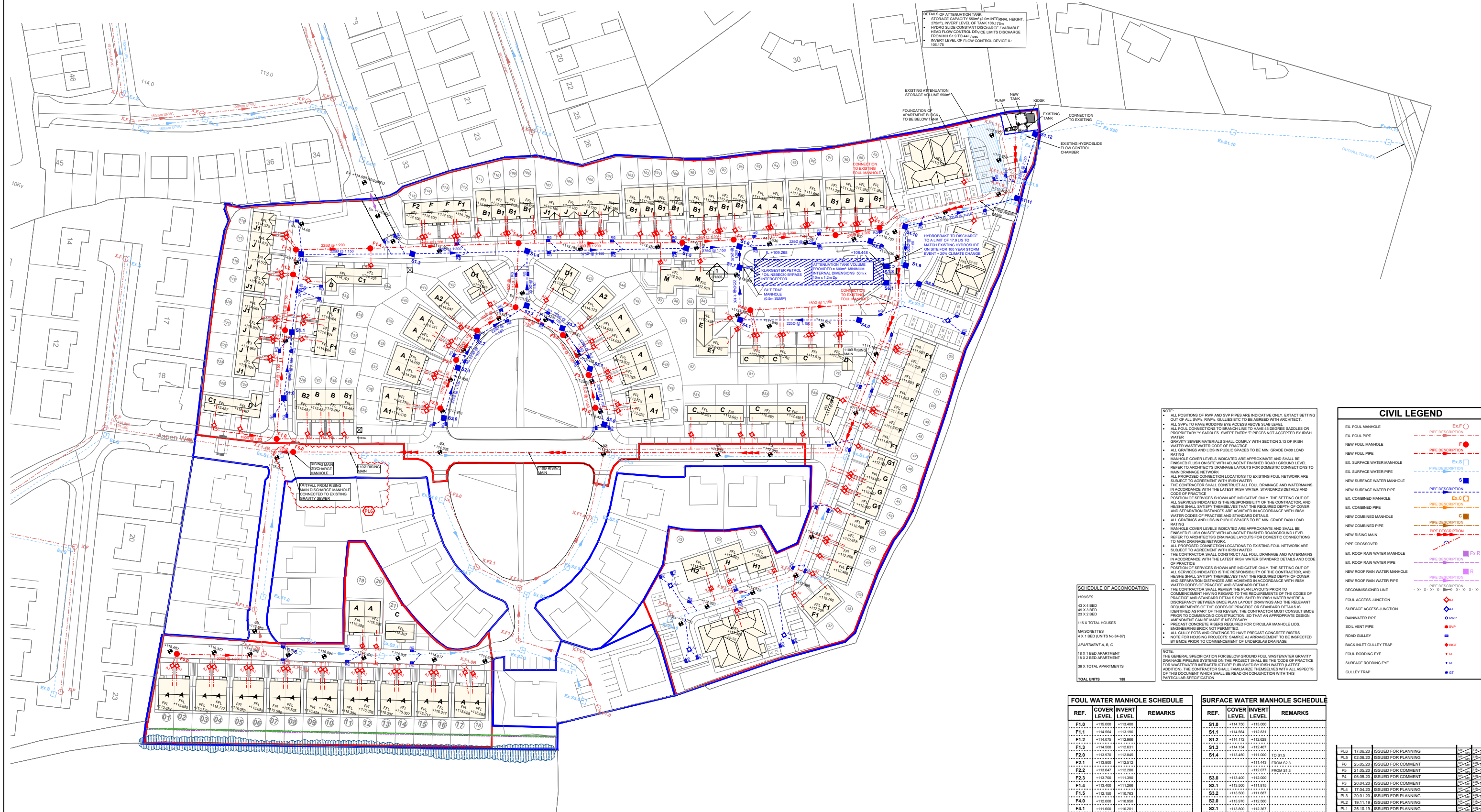




- NOTES**
1. THIS DRAWING IS TO BE READ IN CONJUNCTION WITH ALL ENGINEERS & ARCHITECTS' DRAWINGS. DIMENSIONS ONLY (NOT SCALED) TO BE USED. WHERE A CONFLICT OF INFORMATION EXISTS OR IN ANY DOUBT - ASK.
 2. CONSULTANTS TO BE INFORMED IMMEDIATELY OF ANY DISCREPANCIES BEFORE WORK PROCEEDS.



SCHEDULE OF ACCOMMODATION

HOUSES	APARTMENTS	TOTAL UNITS
43 x 4 BED	18 x 2 BED	166
49 x 3 BED	18 x 2 BED	
23 x 2 BED		
115 x TOTAL HOUSES		
MISCELLANEOUS		
4 x 1 BED (UNITS No 84-87)		
APARTMENT A, B, C		
18 x 1 BED APARTMENT		
18 x 2 BED APARTMENT		
38 x TOTAL APARTMENTS		
TOTAL UNITS	166	

- NOTE:**
- ALL POSITIONS OF RWP AND SWP PIPES ARE INDICATIVE ONLY. EXTRACT SETTING OUT OF ALL SWP, RWP, GULLIES ETC TO BE AGREED WITH ARCHITECT.
 - ALL SWP TO HAVE ROOFING EYE ACCESS ABOVE SLAB LEVEL.
 - ALL FOUL CONNECTIONS TO BRANCH LINE TO HAVE 45 DEGREE SADDLES OR PROPRIETARY 'Y' SADDLES. SNEET ENTRY 'Y' PIECES NOT ACCEPTED BY IRISH WATER.
 - GRAVITY SEWER MATERIALS SHALL COMPLY WITH SECTION 13.13 OF IRISH WATER WASTEWATER CODE OF PRACTICE.
 - ALL GRATING AND LIDS IN PUBLIC SPACES TO BE MIN. GRADE D400 LOAD RATING.
 - MANHOLE COVER LEVELS INDICATED ARE APPROXIMATE AND SHALL BE FINISHED FLUSH ON SITE WITH ADJACENT FINISHED ROAD/GROUND LEVEL. REFER TO ARCHITECT'S DRAINAGE LAYOUTS FOR DOMESTIC CONNECTIONS TO MAIN DRAINAGE NETWORK.
 - ALL PROPOSED CONNECTION LOCATIONS TO EXISTING FOUL NETWORK ARE SUBJECT TO AGREEMENT WITH IRISH WATER.
 - THE CONTRACTOR SHALL CONSTRUCT ALL FOUL DRAINAGE AND WATERMANS IN ACCORDANCE WITH THE LATEST IRISH WATER STANDARDS DETAILS AND CODE OF PRACTICE.
 - POSITION OF SERVICES SHOWN ARE INDICATIVE ONLY. THE SETTING OUT OF ALL SERVICES INDICATED IS THE RESPONSIBILITY OF THE CONTRACTOR, AND HE/SHE SHALL SATISFY THEMSELVES THAT THE REQUIRED DEPTH OF COVER AND SEPARATION DISTANCES ARE ACHIEVED IN ACCORDANCE WITH IRISH WATER CODES OF PRACTICE AND STANDARD DETAILS.
 - ALL GRATING AND LIDS IN PUBLIC SPACES TO BE MIN. GRADE D400 LOAD RATING.
 - MANHOLE COVER LEVELS INDICATED ARE APPROXIMATE AND SHALL BE FINISHED FLUSH ON SITE WITH ADJACENT FINISHED ROAD/GROUND LEVEL. REFER TO ARCHITECT'S DRAINAGE LAYOUTS FOR DOMESTIC CONNECTIONS TO MAIN DRAINAGE NETWORK.
 - ALL PROPOSED CONNECTION LOCATIONS TO EXISTING FOUL NETWORK ARE SUBJECT TO AGREEMENT WITH IRISH WATER.
 - THE CONTRACTOR SHALL CONSTRUCT ALL FOUL DRAINAGE AND WATERMANS IN ACCORDANCE WITH THE LATEST IRISH WATER STANDARDS DETAILS AND CODE OF PRACTICE.
 - POSITION OF SERVICES SHOWN ARE INDICATIVE ONLY. THE SETTING OUT OF ALL SERVICES INDICATED IS THE RESPONSIBILITY OF THE CONTRACTOR, AND HE/SHE SHALL SATISFY THEMSELVES THAT THE REQUIRED DEPTH OF COVER AND SEPARATION DISTANCES ARE ACHIEVED IN ACCORDANCE WITH IRISH WATER CODES OF PRACTICE AND STANDARD DETAILS.
 - THE CONTRACTOR SHALL REVIEW THE PLAN LAYOUTS PRIOR TO COMMENCEMENT OF WORKS TO THE REQUIREMENTS OF THE CODES OF PRACTICE AND STANDARD DETAILS PUBLISHED BY IRISH WATER WHERE A DISCREPANCY BETWEEN THESE PLAN LAYOUT DRAWINGS AND THE RELEVANT REQUIREMENTS OF THE CODES OF PRACTICE OR STANDARD DETAILS IS IDENTIFIED AS PART OF THIS REVIEW, THE CONTRACTOR MUST CONSULT IRISH WATER PRIOR TO COMMENCING CONSTRUCTION FOR THE APPROPRIATE DESIGN AMENDMENT CAN BE MADE IF NECESSARY.
 - PRECAST CONCRETE RISERS REQUIRED FOR CIRCULAR MANHOLE LIDS. ENGINEERING BRICK NOT PERMITTED.
 - ALL GULLY NOTES AND GRATING TO HAVE PRECAST CONCRETE RISERS.
 - NOTE FOR HOUSING PROJECTS: SAMPLE ARRANGEMENT TO BE INSPECTED BY IMPACT PRIOR TO COMMENCEMENT OF UNDERLAB DRAINAGE.
- NOTE:**
- THE GENERAL SPECIFICATION FOR BELOW GROUND FOUL WASTEWATER GRAVITY DRAINAGE PIPELINE SYSTEMS ON THE PROJECT SHALL BE THE 'CODE OF PRACTICE FOR WASTEWATER INFRASTRUCTURE' PUBLISHED BY IRISH WATER. LATEST EDITION. ADDITION, THE CONTRACTOR SHALL FAMILIARIZE THEMSELVES WITH ALL ASPECTS OF THIS DOCUMENT WHICH SHALL BE READ IN CONJUNCTION WITH THIS PARTICULAR SPECIFICATION.

DRAINAGE LAYOUT
SCALE @ A0: 1:500
SCALE @ A2: 1:1000

- CIVIL LEGEND**
- EX. FOUL MANHOLE
 - EX. FOUL PIPE
 - NEW FOUL MANHOLE
 - NEW FOUL PIPE
 - EX. SURFACE WATER MANHOLE
 - EX. SURFACE WATER PIPE
 - NEW SURFACE WATER MANHOLE
 - NEW SURFACE WATER PIPE
 - EX. COMBINED MANHOLE
 - EX. COMBINED PIPE
 - NEW COMBINED MANHOLE
 - NEW COMBINED PIPE
 - NEW RISING MAIN
 - PIPE CROSSOVER
 - NEW ROOF RAIN WATER MANHOLE
 - NEW ROOF RAIN WATER PIPE
 - NEW ROOF RAIN WATER PIPE
 - DECOMMISSIONED LINE
 - FOUL ACCESS JUNCTION
 - SURFACE ACCESS JUNCTION
 - RAINWATER PIPE
 - SOIL VENT PIPE
 - ROAD GULLY
 - BACK INLET GULLY TRAP
 - FOUL ROOFING EYE
 - SURFACE ROOFING EYE
 - GULLY TRAP

FOUL WATER MANHOLE SCHEDULE				SURFACE WATER MANHOLE SCHEDULE			
REF.	COVER LEVEL	INVERT LEVEL	REMARKS	REF.	COVER LEVEL	INVERT LEVEL	REMARKS
F1.0	+115.000	+113.400		S1.0	+114.750	+113.000	
F1.1	+115.000	+113.400		S1.1	+114.750	+113.000	
F1.2	+115.000	+113.400		S1.2	+114.750	+113.000	
F1.3	+115.000	+113.400		S1.3	+114.750	+113.000	
F1.4	+115.000	+113.400		S1.4	+114.750	+113.000	
F1.5	+115.000	+113.400		S1.5	+114.750	+113.000	
F1.6	+115.000	+113.400		S1.6	+114.750	+113.000	
F1.7	+115.000	+113.400		S1.7	+114.750	+113.000	
F1.8	+115.000	+113.400		S1.8	+114.750	+113.000	
F1.9	+115.000	+113.400		S1.9	+114.750	+113.000	
F1.10	+115.000	+113.400		S1.10	+114.750	+113.000	
F1.11	+115.000	+113.400		S1.11	+114.750	+113.000	
F1.12	+115.000	+113.400		S1.12	+114.750	+113.000	
F2.0	+115.000	+113.400		S2.0	+114.750	+113.000	
F2.1	+115.000	+113.400		S2.1	+114.750	+113.000	
F2.2	+115.000	+113.400		S2.2	+114.750	+113.000	
F2.3	+115.000	+113.400		S2.3	+114.750	+113.000	
F2.4	+115.000	+113.400		S2.4	+114.750	+113.000	
F2.5	+115.000	+113.400		S2.5	+114.750	+113.000	
F2.6	+115.000	+113.400		S2.6	+114.750	+113.000	
F2.7	+115.000	+113.400		S2.7	+114.750	+113.000	
F2.8	+115.000	+113.400		S2.8	+114.750	+113.000	
F2.9	+115.000	+113.400		S2.9	+114.750	+113.000	
F2.10	+115.000	+113.400		S2.10	+114.750	+113.000	
F2.11	+115.000	+113.400		S2.11	+114.750	+113.000	
F2.12	+115.000	+113.400		S2.12	+114.750	+113.000	
F3.0	+115.000	+113.400		S3.0	+114.750	+113.000	
F3.1	+115.000	+113.400		S3.1	+114.750	+113.000	
F3.2	+115.000	+113.400		S3.2	+114.750	+113.000	
F3.3	+115.000	+113.400		S3.3	+114.750	+113.000	
F3.4	+115.000	+113.400		S3.4	+114.750	+113.000	
F3.5	+115.000	+113.400		S3.5	+114.750	+113.000	
F3.6	+115.000	+113.400		S3.6	+114.750	+113.000	
F3.7	+115.000	+113.400		S3.7	+114.750	+113.000	
F3.8	+115.000	+113.400		S3.8	+114.750	+113.000	
F3.9	+115.000	+113.400		S3.9	+114.750	+113.000	
F3.10	+115.000	+113.400		S3.10	+114.750	+113.000	
F3.11	+115.000	+113.400		S3.11	+114.750	+113.000	
F3.12	+115.000	+113.400		S3.12	+114.750	+113.000	
F4.0	+115.000	+113.400		S4.0	+114.750	+113.000	
F4.1	+115.000	+113.400		S4.1	+114.750	+113.000	
F4.2	+115.000	+113.400		S4.2	+114.750	+113.000	
F4.3	+115.000	+113.400		S4.3	+114.750	+113.000	
F4.4	+115.000	+113.400		S4.4	+114.750	+113.000	
F4.5	+115.000	+113.400		S4.5	+114.750	+113.000	
F4.6	+115.000	+113.400		S4.6	+114.750	+113.000	
F4.7	+115.000	+113.400		S4.7	+114.750	+113.000	
F4.8	+115.000	+113.400		S4.8	+114.750	+113.000	
F4.9	+115.000	+113.400		S4.9	+114.750	+113.000	
F4.10	+115.000	+113.400		S4.10	+114.750	+113.000	
F4.11	+115.000	+113.400		S4.11	+114.750	+113.000	
F4.12	+115.000	+113.400		S4.12	+114.750	+113.000	

ISSUE	DATE	DESCRIPTION	PREPARED BY	CHECKED BY
PL6	17.06.20	ISSUED FOR PLANNING		
PL5	02.06.20	ISSUED FOR PLANNING		
P6	25.05.20	ISSUED FOR COMMENT		
P5	21.05.20	ISSUED FOR COMMENT		
P4	08.05.20	ISSUED FOR COMMENT		
P3	20.04.20	ISSUED FOR COMMENT		
PL4	17.04.20	ISSUED FOR PLANNING		
PL3	20.01.20	ISSUED FOR PLANNING		
PL2	19.11.19	ISSUED FOR PLANNING		
PL1	25.10.19	ISSUED FOR PLANNING		
P2	17.10.19	ISSUED FOR COMMENT		
P1	11.07.19	ISSUED FOR COMMENT		

PLANNING

BM	12 Mill Street, London SE1 2JY, United Kingdom Tel: 0204 364 3413/2322 www.bm.co.uk
ACEI	ACEI

CLIENT: **BODERG DEVELOPMENTS**

PROJECT TITLE: **FOXBORROW, PORTLOAISE.** BM PROJECT NO: **19.177**

MODEL REFERENCE: [] MODEL REV: [] STABILITY: []

DRAWING TITLE: **DRAINAGE LAYOUT**

DRAWING NO: **FXP-BMD-00-XX-DR-C-1000** ISSUE: **PL6**