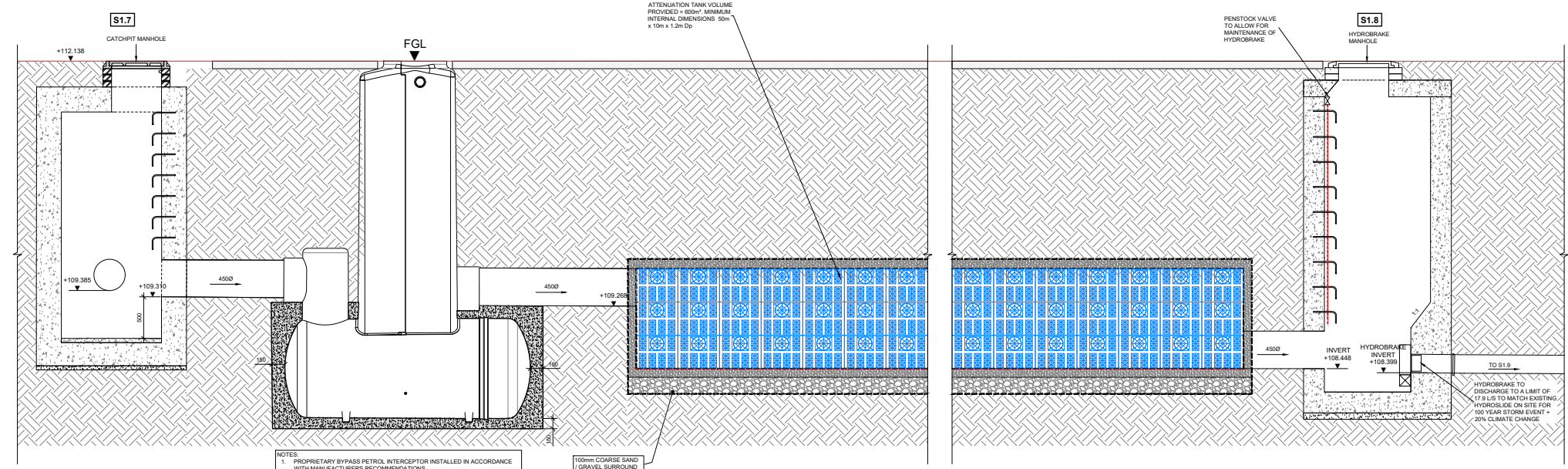


NOTES

- THIS DRAWING IS TO BE READ IN CONJUNCTION WITH ALL ENGINEERS & ARCHITECTS DRAWINGS. DIMENSIONS ONLY (NOT SCALING) TO BE USED. WHERE A CONFLICT OF INFORMATION EXISTS OR IF IN ANY DOUBT - ASB.
- CONSULTANTS TO BE INFORMED IMMEDIATELY OF ANY DISCREPANCIES BEFORE WORK PROCEEDS.



NOTES:

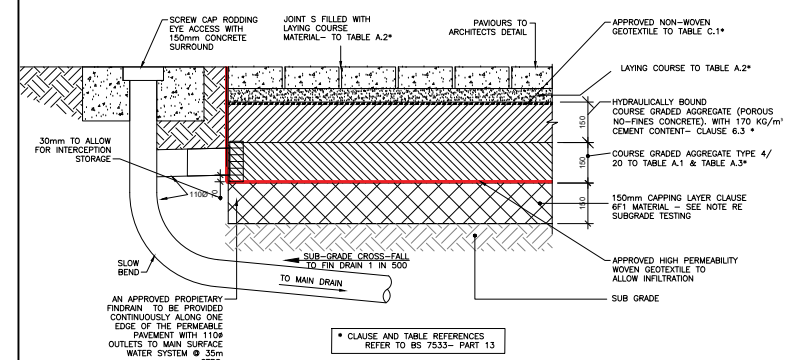
- PROPRIETARY BYPASS PETROL INTERCEPTOR INSTALLED IN ACCORDANCE WITH MANUFACTURERS RECOMMENDATIONS.
- INTERCEPTOR TO BE FULLY ENCASED IN MINIMUM 150mm CONCRETE.
- INTERCEPTOR ACCESS COVER TO COMPLY WITH REQUIREMENTS OUTLINED IN DRAWING C-1250 DETAIL G FOR LIDS LOCATED IN SOFT LANDSCAPING.

SECTION
SCALE @ A2: 1:25
SCALE @ A2: 1:50

SECTION THROUGH PETROL INTERCEPTOR AND AQUACELL ATTENUATION TANK

NOTES:

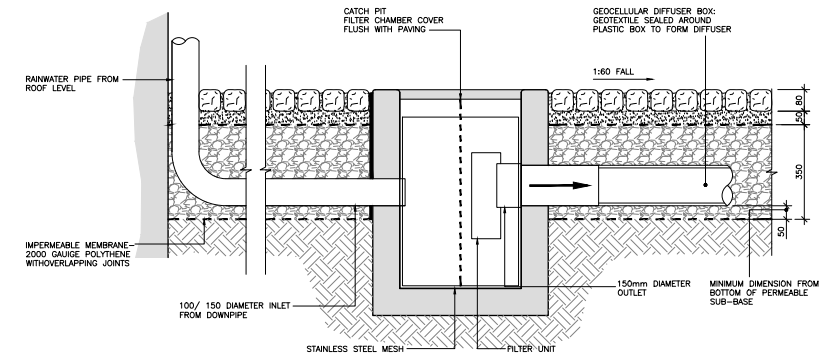
- DETAILED DESIGN OF THE PAVEMENT BUILD-UP, THE FIN DRAIN LAYOUT & FIN DRAIN OUTLET LOCATIONS BY THE SUPPLIER IN ACCORDANCE WITH BS7533-PART 1.3. THE PAVEMENT IS TO BE DESIGNED TO TAKE THE TENDER LOADING.
- CONTRACTOR SHALL ALLOW FOR TANKING (USING AN IMPERMEABLE LINER APPROVED BY THE PERMEABLE PAVING SUPPLIER) OF ALL PERMEABLE PAVED AREAS.



* CLAUSE AND TABLE REFERENCES REFER TO BS 7533- PART 1.3

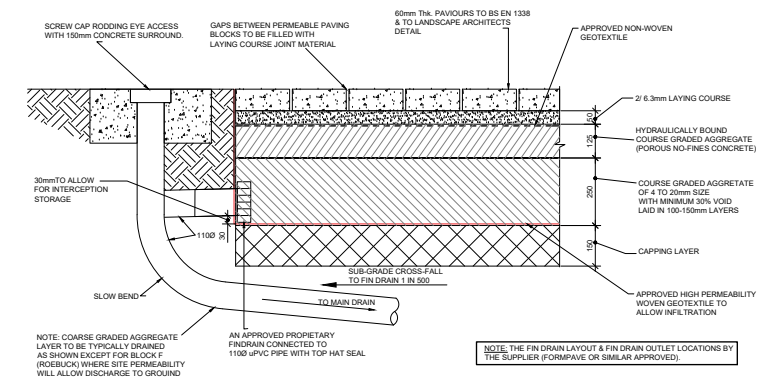
TYPICAL PERMEABLE PAVING DETAILS AND FIN DRAINAGE DETAILS

SCALE @ A2: 1:10
SCALE @ A2: 1:20



TYPICAL SECTION THROUGH CATCH PIT AND GEOCELLULAR DIFFUSER BOX

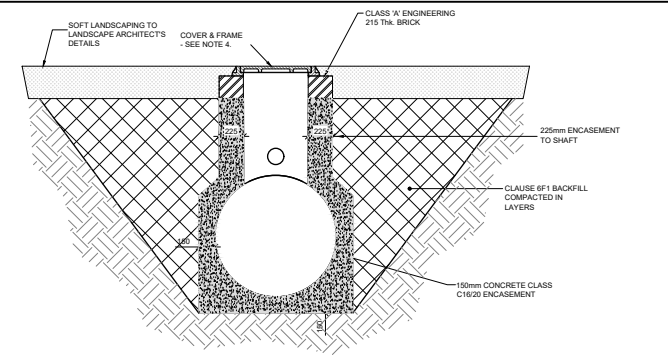
SCALE @ A2: 1:10
SCALE @ A2: 1:20



NOTE: THE FIN DRAIN LAYOUT & FIN DRAIN OUTLET LOCATIONS BY THE SUPPLIER (FORMATIVE OR SIMILAR APPROVED).

PERMEABLE PAVING DETAIL FOR AREAS WITH FIRE TENDER ACCESS (5% CBR ASSUMED)

SCALE @ A2: 1:10
SCALE @ A2: 1:20

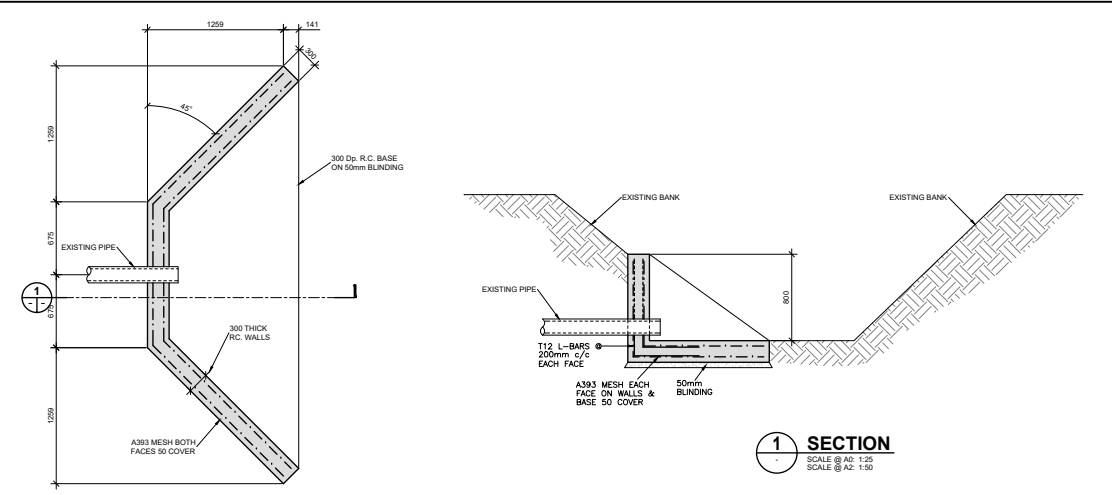


TYPICAL SECTION THROUGH PETROL INTERCEPTOR SHOWING CONCRETE SURROUND DETAIL

SCALE @ A2: 1:25
SCALE @ A2: 1:50

NOTES:

- PROPRIETARY BYPASS PETROL INTERCEPTOR INSTALLED IN ACCORDANCE WITH MANUFACTURERS RECOMMENDATIONS.
- INTERCEPTOR TO BE FULLY ENCASED IN MINIMUM 150mm CONCRETE.
- INTERCEPTOR ACCESS COVER TO COMPLY WITH REQUIREMENTS OUTLINED IN DRAWING C-1250 DETAIL G FOR LIDS LOCATED IN SOFT LANDSCAPING.



PLAN OF OUTFALL TO WATERCOURSE

SECTION
SCALE @ A2: 1:25
SCALE @ A2: 1:50

ISSUE	DATE	DESCRIPTION	ISSUED BY	APPROVED BY
PL5	17.06.20	ISSUED FOR PLANNING	ASB	ASB
PL4	02.06.20	ISSUED FOR PLANNING	ASB	ASB
P3	25.05.20	ISSUED FOR COMMENT	ASB	ASB
P2	21.05.20	ISSUED FOR COMMENT	ASB	ASB
PL3	20.01.20	ISSUED FOR PLANNING	ASB	ASB
PL2	19.11.19	ISSUED FOR PLANNING	ASB	ASB
PL1	25.10.19	ISSUED FOR PLANNING	ASB	ASB
P1	11.07.19	ISSUED FOR INFORMATION	ASB	ASB

PLANNING

BM
BARNETT MANBY
Consulting Engineers, Civil, Structural, Project Management. Email: bm@bm.co.uk Web: www.bm.co.uk

ACEI
The Institution of Structural Engineers

CLIENT: **BODERG DEVELOPMENTS**

PROJECT TITLE: **FOXBORROW, PORTLAOISE.** BM PROJECT No: **19.177**

MODEL REFERENCE: MODEL REV: REVISIBILITY

DRAWING TITLE: **SUDS DETAILS**

DRAWING No: **FXP-BMD-00-XX-DR-C-1205** ISSUE: **PL5**